

Kids City Project Notes

Project Description:

Kids City is a new building in Phenom Pehn, Cambodia . It is an eleven story building specialising in children's entertainment and retail. One floor is devoted to science exhibits. The Project involved 52 exhibits built in New Zealand. Themed banners and graphic panels were produced in New Zealand. Exhibit table bases and a geodesic dome were built in Cambodia.

Completion date: mid 2013

Tim Stephenson Design's Involvement.

I contracted to Science Alive Exhibits to provide:

- Exhibition Design.
- Modular exhibit tables built in Cambodia.
- Themed banners.
- Some Exhibits.
- The Augmented Reality dome and handsets.
- Exhibit graphic explanatory panels.
- Lighting design.

For the purpose of this submission, I will concentrate on only a couple of aspects as other skills are shown in the previous example.



WORK EXAMPLE

Kids City

Phenom Penh

Plot date March 24, 2016

Drawing

Project Notes

Layout Number

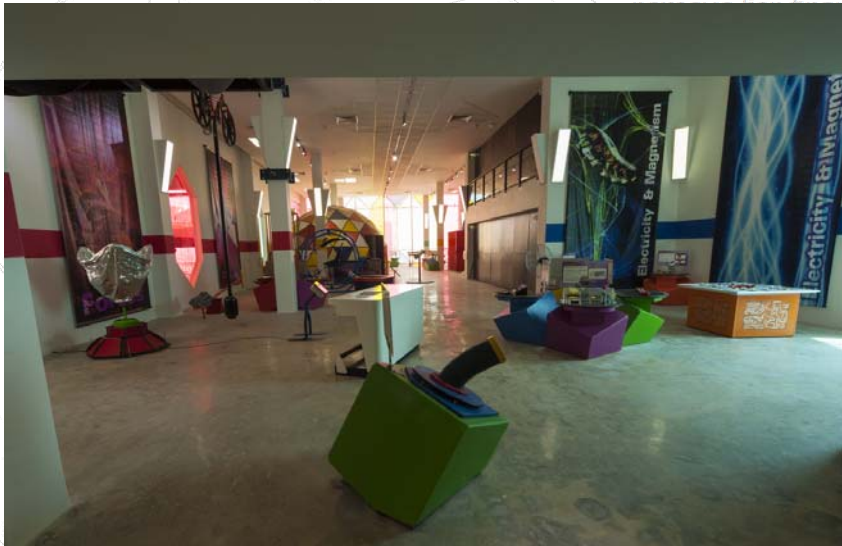
F 00

Fasteners

Box general PVA glue
32 mm staples @ 100 c/s

Banners
Designed and printed in NZ

Table base Plate to
Wedge
32 mm No. 8 c/sk
superscrews



Parts

Box Rear Right (B)
Graphic Panels
Box Rear Left (Q)



Align Base plate with bottom rear

Section

Finishes

Black laminate
to vertical faces
of table base only.

Wedge
Primary colour laminate

Rest of box
Primary colour laminate



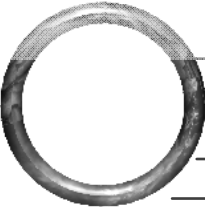
Exhibit Design

box front side

Exhibit table bases
Designed in NZ
made in Cambodia.

Base plate paint black

Front Elevation



WORK EXAMPLE

Kids City

Phenom Penh

Plot date March 24, 2016

Drawing
Tables, Banners, Graphics

Layout Number
F 01

M8 x 25 socket head cap screw nickle plated



Dome and Counter

m8 dome nut nickle plate

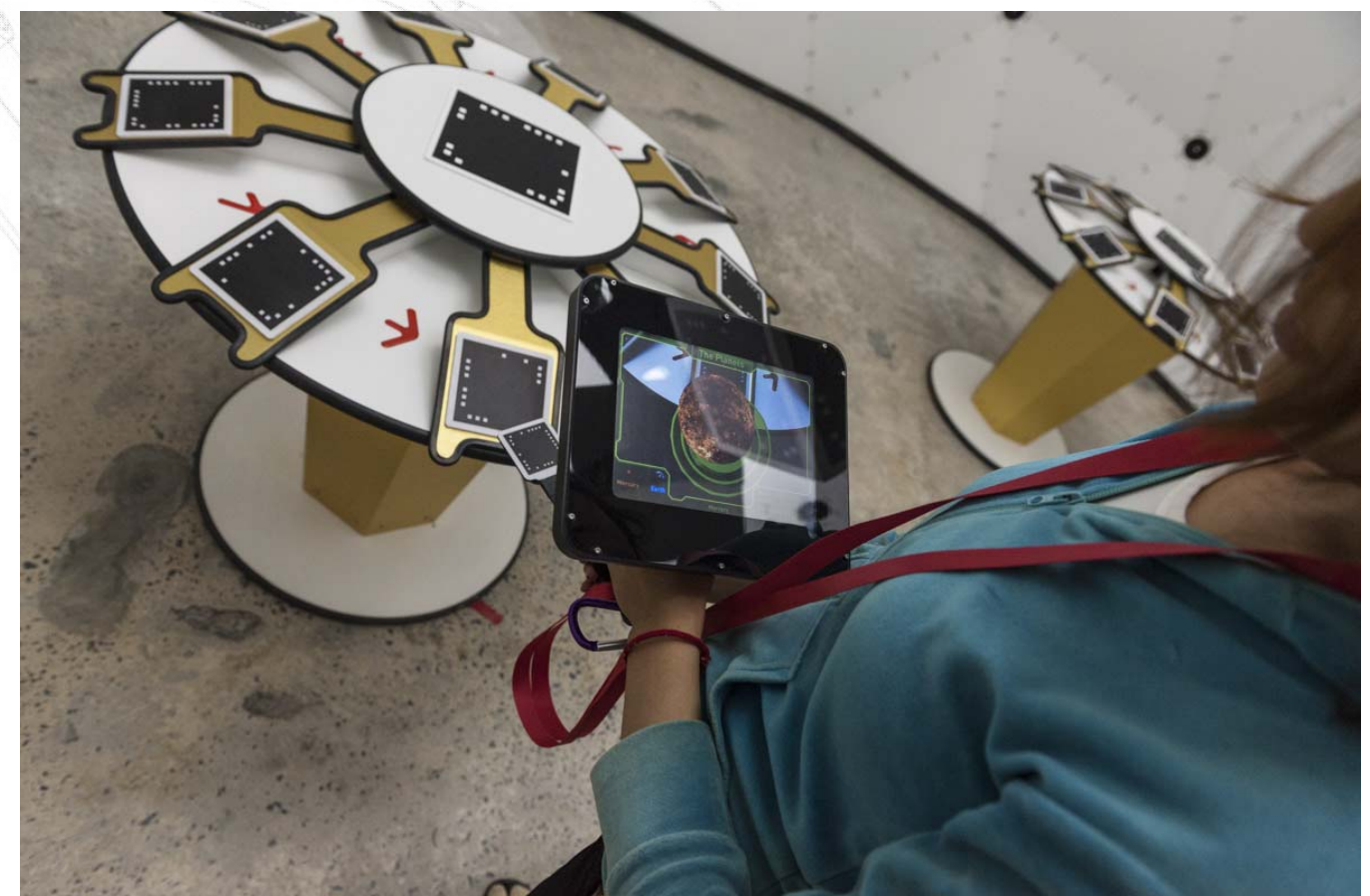


Dome Interior



Handset Storage

The geodesic dome was designed here and constructed in Cambodia from CNC files.



In Use. The camera see the target pattern and places a 3d rendering on that space. that can then be picked up by the user with a patterned paddle.



WORK EXAMPLE

Kids City

Phenom Penh

Plot date March 24, 2016

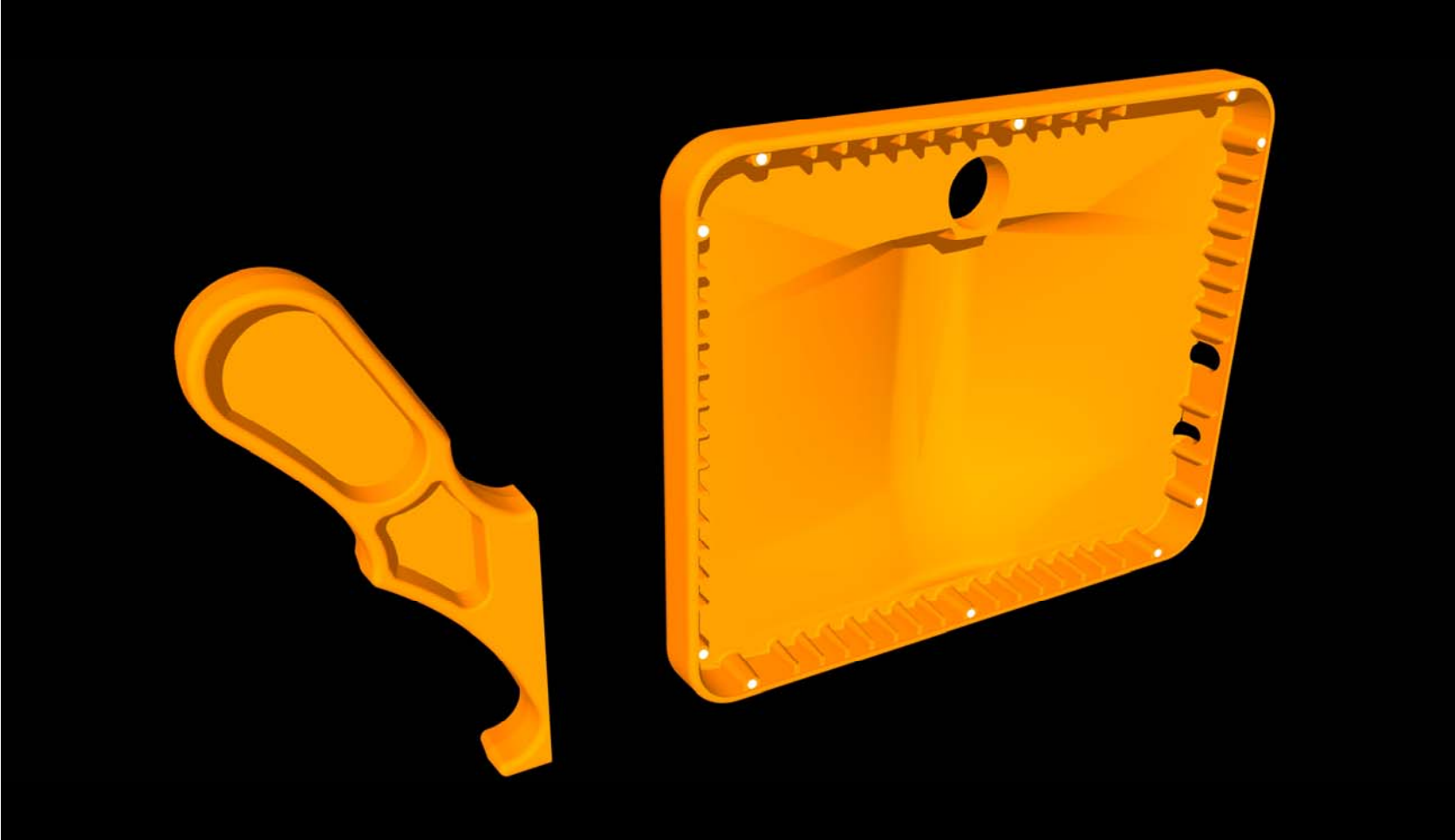
Drawing
AR Dome

Layout Number

F 02

© Tim Stephenson

TIM STEPHENSON DESIGN - tim@timstephenson.co.nz - +64 275 532 784 - ph +64 3 3272246 - fax: +64 3 3272346



Computer generated 3D model



The handset houses a tablet with Augmented Reality software. It was modeled on the computer . Tested with a 3d printed prototype then fifty were manufactured here using polyurethane in a silicone mould.



WORK EXAMPLE

Kids City

Phenom Penh

Plot date March 24, 2016

Drawing
Handset

Layout Number
F 03

© Tim Stephenson

TIM STEPHENSON DESIGN - tim@timstephenson.co.nz - +64 275 532 784 - ph +64 3 3272246 - fax: +64 3 3272346